

BARWICK in ELMET & SCHOLES PARISH COUNCIL

Newsletter

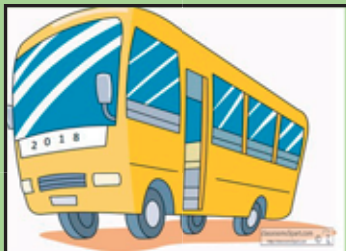
February 2018



Remembering 2017. Looking forward to 2018

2017 was a memorable year for the Parish, there were consultations on the Neighbourhood Plan (see page 2), whether to split the Parish (page 6), new Councillors joined us (page 3) and we obtained a defibrillator for Barwick in Elmet.

This year we look forward to the Tour de Yorkshire coming through our Parish once again (page 2), we will commemorate the hundredth anniversary of the end of



World War One and the Parish Council is looking to secure the future of Hall Tower Hill by taking over as Trustees. We will continue the work begun last year in pressing Leeds City Council for a reduction of the speed limit in the Parish to 20mph and to ensure minimum impact of the East Leeds Orbital Road (below). Proposed housing developments such as the one in Scholes (below) and the Parlington Estate will have an adverse impact on the character of our Parish as will a proposal for a crematorium near the golf course.

NEW

300 more houses for Scholes?

Every resident should have received a letter from the Parish Council regarding the proposal to build three-hundred more houses in Scholes. If you haven't already commented and wish to do so, you can go online, visit Leeds City Council's website, <https://publicaccess.leeds.gov.uk/online-applications/>, the reference number is **17/08451/OT** or you can write to Leeds City Council Planning Services, Leonardo Building, 2 Rossinton Street, Leeds, LS28HD. The deadline for comments is 28th February.

Drop in Consultation Event

A consultation event is being organised. Details are not known at the time of this newsletter going to print - the Parish Council notice boards and Facebook page will be updated once we have details - please keep checking.



East Leeds Orbital Road (ELOR)

Since the last newsletter, Leeds City Council have been given planning permission to build a new orbital road from Thorpe Park to Red Hall. This will affect every resident as we all commute to Leeds but some Scholes residents will be particularly affected by noise and reduced air quality. The Planning Permission was granted subject to forty-three conditions. Parish Councillors have already had meetings with Leeds City Council officers and further discussions will take place as necessary. We aim to ensure that the impact of this road on those living nearby is kept to as little as possible (ideally there should be no noticeable change to either air quality or noise and compensation where there is).

BARWICK in ELMET & SCHOLES PARISH COUNCIL

Chairman : eclairehassell@live.co.uk Tel: 0113 281 1231

Barwick in Elmet Ward

nbeaumontpc@gmail.com (Neil)
glynatpc@gmail.com (Glyn Davies)
howard.bedford@epexcel.com
Vacancy
Vacancy

Scholes Ward

matt@mattandjillian.com (Matt Baker)
paul.remmer@lanesfordrains.co.uk
stellawalshparishcouncil@gmail.com
karen.dalesparishcouncil@talktalk.net
craigbarker.parishcouncil@outlook.com
philmaude@gmail.com

NEXT COUNCIL MEETINGS

Monday 5 March

Scholes Methodist Hall
Open Forum at 7 pm

Monday 2 April

Barwick Methodist Schoolroom
Open Forum at 7 pm

Clerk to the Council

Keith Langley
clerk154@btinternet.com
0113 393 5861



www.facebook.com/BarwickInElmetAndScholesParishCouncil

websites— www.barwickandscholespc.com (old), www.barwickandscholespc.org/ (new)
www.barwickandscholesneighbourhoodplan.co.uk

We are delighted to announce the launch of our new website, this is still under construction and we hope to launch this and add pages in the coming weeks.

Message from the local Victim Care & Crime Prevention Officer



Many people are being cold called by people purporting to be from the HMRC. The victims are been told they owe taxes from years ago or for overdue tax bills, have been threatened with prosecution if not paid immediately or they will come to arrest them. The victims are engaging with the suspects, they either call them back or paying out substantial amounts of money.

Please do not to engage in such calls as the HMRC would never contact people in this way.

Neighbourhood Watch

Neighbourhood Watch coordinators are needed, please contact the Clerk if you are interested.

Tour de Yorkshire

It's back! The Tour de Yorkshire cycle race comes through our Parish again. This time the cyclists will be coming from Garforth and heading to Scholes along Leeds Road. Through Scholes they go along Main Street, Station Road and exit the village along Scholes Lane. Specific times are yet to be published but there will be a Sprint Stage at the same place as the 2015 event (but in the opposite direction). The events comes to our parish on a Friday (4th May) and therefore the Parish Council will not be organising the kind of events we ran three years ago but it will be putting out bunting and are happy for village organisations and individuals to plan activities.



Neighbourhood Plan referendum - the result

The Parish Council would like to thank all the residents who contributed to the Neighbourhood Plan over the five years it took to produce. In particular thanks to all the members of the steering group. It was a very long haul.

The Plan passed its' referendum on 12th October – 36% of residents voted and of those 92.77% were in favour. 1439 votes cast 1335 in favour. A brilliant turn out. The Plan immediately became a Statutory Planning Document that has to be considered in any potential development, large or small. There are a limited number of copies available to borrow from Keith Langley, the Clerk and it is available to view on our website. Please consider the policies in the Plan when responding to all planning applications.

Meet Your New Councillors

Craig Barker

Although Craig and his family only moved to Scholes in November 2015, he had family living in the village for over fifty years, including over sixteen Aunties, Uncles, Cousins and Grandparents.

He has worked in senior management for a Blue-Chip company in Sales & Business development and more recently was the owner and manager of a large catering company in Leeds. He has been a self-employed businessman for over ten years now.

Craig and his wife Nichola have two Children, William (4yrs old) and Philippa (2yrs old) and Craig says: "I am looking forward to working with residents and the Parish Council to ensure that Scholes & Barwick always retain their identities and remain safe and desirable villages to live in".



Phil Maude

Phil has lived in the village since 1981. He is a recently retired solicitor who has been an active member of the community, he was Chair of Governors of Scholes Primary School for around ten years and served on the Neighbourhood Plan Steering Committee (see page 2 for the result of the referendum).

Phil is an enthusiastic walker and cyclist and regularly uses local footpaths and bridleways. He is a member of the Local Access Forum, a statutory body set up under the Highways Act to advise the local authority on the use of public footpaths and bridleways. Phil recently completed the South West Coastal path (630 miles!).

Calling Barwick Residents



Parish Councillor

Following the recent resignation of Ian Westmoreland, there are now two vacancies for Parish Councillors in the Barwick Ward. At the time of going to print, there has been one expression of interest which still leaves one vacancy to be filled.

Anyone can apply as long as you are over eighteen and are on the Electoral Register.

If you are interested please contact the Clerk (contact details on page two).

Meanwhile, we wish Ian well and thank him for his contribution to the Parish Council.

BARWICK in ELMET and SCHOLES COMMUNITY FUND

Community Grants

On behalf of the Community, the Community Fund Committee wishes to thank Festival Republic for their continued generosity and support.

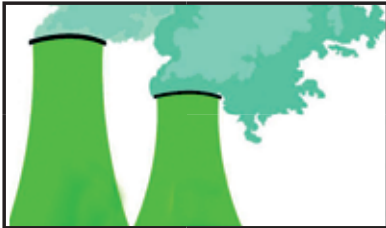
Nineteen Community Grant applications were received this year, requesting a total of £31,910.58, with the total funds available for awards this year being £17,626.54. This is comprised of £10,000 from the sale of complimentary Leeds Festival tickets, £7,500 cash donation from Festival Republic with the remainder being ongoing funds in the account from previous allocations.

A summary of the grants awarded is shown in the table below.

Name of Applicant	Amount Awarded	Grant Award
	(amount requested if different)	
Scholes		
Bowling Club	£845	Purchase and installation of new hot water boiler and sink.
Cricket Club	£2344 (£4088)	Purchase of additional machinery and landscaping work following the loss of the old Pavilion to fire
Social Club	£750	Day trip to Southport (including meal) Scholes social club are comprised of residents in the sheltered housing complex in the village
Village Hall	£519.66 (£3112)	Purchase of table / chair trolleys and 2 x 25W Megaphones. There was also an unsuccessful application for funding for a new fire alarm
In Bloom Group	£3393.58	Purchase of new display boards.
Friends of the Primary School	£3000	Purchase and installation of outdoor music activity panels.
Barwick in Elmet		
Baby and Toddler	£200	Purchase of new books for library area (meets Thursday afternoons in the Village Hall for pre-school children)
In Bloom Group	£500 (£600)	Redesign of the New Inn flower beds including the installation of a circular retaining wall.
Bowling Club	£1890	Repair / installation of entrance path to the club.
Village Hall	£1250	Purchase, and installation of a new external door (kitchen).
Allotments	£3000	Towards new fencing.
The committee will be requesting further information from the applicants prior to any final decision. As such £3000 from this year's fund has been held back until a decision has been made.		
Others		
Barwick & Scholes Junior/ Mount Saint Marys Football	£1450	Purchase of a new lawnmower and storage container.
Royal British Legion	£1000	A pledge of £1000 has been made for a pilgrimage on behalf of the parish, should they be unable to secure funding via other sources.
Elmet Greenway Group	£250	Purchase of safety equipment
Subject to further information being provided		
Six further applications were made in 2017, which were unable to be fulfilled.		
Ticket applications for 2018 will be open on Feb 28 th , with a closing date of 10pm April 30 th .		

Air Quality Survey

Leeds City Council is carrying out a consultation regarding its plans to improve air quality to meet government targets. This may mean charging buses, HGVs, taxis and private hire vehicles that don't meet emission standards.



If you have an Internet connection, Leeds City Council would appreciate it if you can complete their online survey, it should take about twenty minutes. The closing date is 2nd March 2018. You can find the survey by putting Leeds City Council air quality into any Internet search engine.

New Charges for Household Waste

Leeds have announced some changes to the collection of larger items that are no longer required. They will still collect from your driveway but charge a small fee. (Phone Leeds to arrange collection as before). If you leave items on the pavement in the hope that they disappear it will be considered that you are fly tipping and may be liable to prosecution. If you use an independent company to remove waste please get a receipt just in case it gets fly tipped on a roadside.



Prices for rubble

- The price for up to one 25 litre bag or equivalent of soil/rubble will be £2.60;
- The price of one 25 litre bag or equivalent of plasterboard will be £4.80;
- The price of one sheet of plasterboard up to 180 cm x 90 cm will be £3.00;
- The price of one tyre will be £1.50;
- All single items will be £2.60 each.

Dog Waste

Leeds City Council (LCC) bins will accept dog waste. Residents are reminded that all dog waste can be deposited into any of the LCC black bins on the street.

Barwick In Elmet Allotments

If you think food prices are increasing in the shops why not have a go at growing your own. There is some availability at Barwick, modest rent, water on site, friendly people to give you advice and help. Interested – contact Claire Hassell, eclairehassell@live.co.uk or 0113 2811231.

New Properties off Belle Vue Road (near Manor House)

This house building work started on February 5th and continues for eighteen months. If there are any issues please contact the Clerk or Cllr. Stella Walsh

WORLD SCOUT JAMBOREE 2019

Eight lucky Scouts plus two leaders have earned places at the 24th World Scout Jamboree. They will visit North America, Mexico and one other country, you can find out more as you help them to raise the funds to enable them to go.

These are lads and lasses from Barwick and Scholes, all now members of Scholes Scouting Group, aged from 12 to 16 so Scouts and Explorers. They will also be working towards their Duke of Edinburgh Award – bronze, silver and gold whilst training & preparing for the Jamboree.



Each scout needs to raise £3,800 for the air fares, equipment and the training camps preparing them for the Main Event in 2019. **Please will you help them?** Support the various functions they are putting on. Help them arrange a fund raising function, or put on a function for them. The Scouts will be delighted to attend anything and everything and tell you all about it.

Please inform the Clerk Keith Langley of any event and we will publicise it on our web site.

Scouting is a great opportunity for our boys and girls – teaching them many life skills and giving them opportunities to take part in numerous activities, learn new skills and meeting and mixing with a wide variety of other youngsters.

If you would like to make a donation there are 2 ways to do so or to pay in funds you have raised at an event:-

Scholes and Barwick Jamboree fundraising page:.....

<https://mydonate.bt.com/fundraisers/scholes-barwick-scouts> or

By cheque to Central Yorkshire County Scout Council – Jamboree account at

Central Yorkshire County Scouts, Austhorpe Road, Leeds, LS15 8QR and please enclose a letter saying it is **a donation for Barwick and Scholes only.**

Finally read the Scouts contribution to our News Letter.

Hello, my name is Nadia, and I have been selected to go to the 24th World Scout Jamboree in 2019; not only representing the Central Yorkshire County, but also the UK. From writing my initial application, checking grammar and punctuation, to a late(ish) night interview, and then camping through Storm Brian and a flooded tent, the selection process sounded long, but in fact, felt like a matter of days. When I got the email saying that I had been selected I was sat with the dog watching Wednesday night TV. I was thrilled, shocked and honoured to be offered the place due to there being so many other amazing scouts in contention that I had the pleasure of meeting. For one of the only times in my life I was speechless. For me the Jamboree isn't just for the opportunities to try new things like the mile long zipline or white water rafting, but also to improve my confidence and people skills, and, most importantly, to meet new people from all over the world to learn about cultures and languages in order to understand people, and one day live in peaceful harmony with everyone.

As for itinerary whilst we are in America, we will spend 2 weeks camping in West Virginia on the Summit Bechtel Family National Scout Reserve with over 50,000 other scouts from over 200 nations, then we will travel to either Washington or New York for a city break to experience life there, and finally we will be going to somewhere in the USA or Canada to stay with a family, again allowing us the once in a lifetime opportunity to experience life there first hand. The whole 3 week

WORLD SCOUT JAMBOREE 2019 (continued)

experience costs us £3800 which we have to fundraise in groups or alone, however it is 100% worth it.

Thank you for taking the time to read this as the Jamboree means so much to me, especially as I have wanted to go since 2013 when I first joined scouts. Fast forward 5 years and my dream has finally come true.

They have their first coffee morning booked for the 17th of March at St Philips Church 10-12, this will be the young peoples first outing and an ideal opportunity to come along and meet with them.

De-Grouping of the Parish Survey

The final result was that the Parish should remain as at present, the vote was 206 to degroup and 1131 to remain. All papers were verified by Leeds, some sent direct and including the 600 delivered to the Clerk These were opened in confidence and just the comments from residents recorded anonymously.



Summary of comments:-

Benefit of historical links, PC works well, long standing Parish. Increased costs running two Parishes from the same income. Benefit of everyone fighting developments. Neighbourhood Plan covers the whole Parish.

Some suggested Scholes would be better if it made its' own decisions. Felt the PC needed to listen to residents and explain decision making. Lack of transparency an issue and also late publication of agendas and minutes. Better bus connectivity is required.

A suggestion that Barwick is given preference, Scholes is the 'poor relation'. Whilst others felt Barwick should have a larger share of the income as it is the larger village.

These issues will be considered and debated by the PC in due course. Residents are welcome to attend PC Meetings and speak at the Forum, e-mail addresses for the Clerk and all Councillors are published and the Clerk's phone number. Please contact us to discuss any points.

Post Office



The opening hours have changed at Barwick Post Office since its' refurbishment. It is now open seven days a week from 7.0am to 7.0pm.

Need a Coffee?



Barwick Village Hall would like to welcome residents and friends to come and have a coffee and a chat on the 2nd and 4th Tuesday of every month. Everyone is welcome, any age, male or female, toys and squash for junior residents. This is a new initiative to make more use of the Hall so please come and support, no fixed charge, pay what you think the coffee is worth!!

Scholes Gala - helpers needed

This year, Scholes gala is on Saturday 9th June 2018 in the grounds of Saint Philip's Church.

The Gala team are only a small group of seven volunteers, so welcome any assistance.

They desperately need 'man power' this year to help move heavy items, before, and one hour after the event finishes.

Funds raised from the Gala go towards maintenance of the Village Hall, which is now used by many local groups to do their own fund raising, so if you are able to get involved in any small way, from advertising, to running a stall to raise funds for the hall, or simply helping out on the day, it would be greatly appreciated. If you can help please contact Helen Blackburn on 0795 7423875 or by e-mail helen@msdworld.plus.com.

Scholes Women's Institute (WI)

Scholes WI are looking for new members of all ages. The WI meets on the third Wednesday of the month in Scholes Methodist School Room at 7.30 pm. The first meeting is free so no obligation to join come and along and see if you like it. You do not need to live in Scholes to become a member.

Upcoming speakers include;

February 21st Helen Shaw, *Ballroom Dancing*

March 21st Jane Oakshott MBR, *Colourful Characters in Literature*

Followed of course by a cup of tea and a chat.



Peace Lamp

Page four of the October Parish Council newsletter explained a proposal for a Peace Lamp. The Peace Lamp Working Group held its first meeting last month. The group would like to thank Ward Councillors for the donation of £500 to buy the lamps and Scholes Village Hall for a donation of £50. If any residents want to get involved please get in touch with Cllr Stella Walsh. Details of the project will be circulated.

Volunteers needed - Barwick in Elmet

There was a very encouraging response to an appeal in the February 2016 newsletter for volunteers to help deliver this newsletter to streets in Scholes. At the time all the streets in Barwick in Elmet were covered but that's no longer the case. The newsletters are brought to your home. We need people to deliver to Beck Meadow, Parlington Meadow, Main Street and Potterton Lane. If you can spare an hour or even half an hour (equivalent to ten minutes once a quarter), your help and support would be greatly appreciated. If you can help, then please get in touch with Keith Langlely, the Clerk to the Council.

