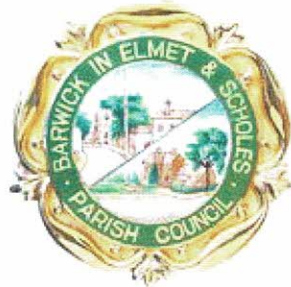


BARWICK in ELMET & SCHOLES PARISH COUNCIL

Newsletter December 2013



**MERRY
CHRISTMAS
and a HAPPY
NEW YEAR
2014**



THE ROYAL BRITISH
LEGION



REMEMBRANCE SUNDAY 2013

There were marvellous attendances for the services held on 10 November with St. Philip's Church packed for the early gathering involving the wonderful uniformed organisations with eight youngsters having speaking parts and a further four as flag bearers. The parade to Scholes War Memorial was led by RBL Standard Bearer Nigel Marshall and the service conducted by Dr. Alan Stanley.

The Barwick Youth Groups paraded via Jack Heaps Field to the War Memorial for the Service conducted by Vicar Andy Nicholson prior to the church service at All Saints'. Major Stan Hardy, DL, representing HM The Queen laid wreaths along with Parish Chairman Ben Hogan and Lt.Col. Amanda Hassell, President of the revitalised local branch of the Royal British Legion and Ward Councillor Matthew Robinson. The wreaths laid at both Memorials will be taken to be placed near to the graves of local servicemen at the War Graves Cemeteries at Ypres and the Somme, a most fitting gesture. The British Legion '**Poppy Appeal**' was again very successful and it is expected that a sum of **£4,000** will have been raised from local residents and thanks are extended to all those who contributed. The Barwick in Elmet & Scholes Branch of the Royal British Legion is now looking to recruit more new members (only £14 pa) and those who would like to support such a worthy cause should contact the Secretary Matt Baker for more details via email at matt@mattandjillian.com



WE WILL REMEMBER THEM

BARWICK in ELMET & SCHOLES PARISH COUNCIL

Chairman : b_hogan@sky.com (Ben)

Barwick in Elmet Ward

neil.beaumont@centara-ltd.com
burrow.j@sky.com (Julie)
eclairhassell@live.co.uk
elainejeffers@hotmail.co.uk
daleeming@btinternet.com (David)
geoffyapp@aol.com

Scholes Ward

matt@mattandjillian.com (Matt Baker)
tomcrosfill@hotmail.co.uk
elkell65@gmail.com (Julian Kelly)
gerrymcdonough@hotmail.co.uk
stellawalshparishcouncil@gmail.com

NEXT COUNCIL MEETINGS

Monday 6 January

Scholes Methodist Hall
Open Forum at 7 pm

Monday 3 February

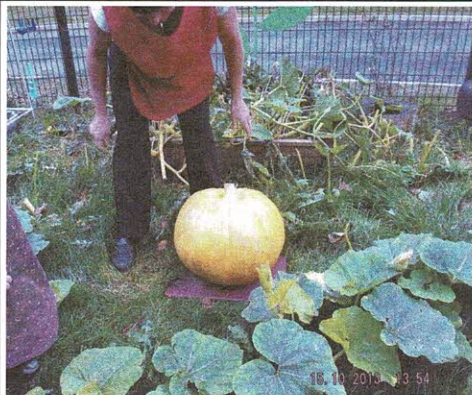
Barwick Methodist Schoolroom
Open Forum at 7 pm

Clerk to the Council

Chris Hassell
chrisdhassell@hotmail.com
0113 393 5861

web sites— **www.barwickandscholespc.com.**

www.barwickandscholesneighbourhoodplan.co.uk



PUMPKIN SURPRISE

Children at a local nursery had planted seeds in the spring to grow a pumpkin but they did not grow very well. To save the disappointment for the young enthusiasts Jack Littlewood, who has had an allotment in Scholes for over 40 years, intervened and sent them one of his giant specimens which he had grown on Scholes allotments. Michelle Duff (the nursery cook) took the pumpkin and carefully placed it in the garden for the children to find and

they were delighted and amazed that it had grown so large overnight. The children made a pumpkin lantern for Halloween and Michelle made pumpkin soup and pies for them to try. Our thanks to Jack for his timely gesture.

ALLOTMENTS up for grabs : If you fancy turning your hand to cultivating your own produce there are plots available in both villages.

Scholes (near to Sirrell's Garage) - phone Sue Glover on 264 1626

Barwick (behind the Primary School) - phone Claire Hassell on 281 1231

NEW LUNCHEON CLUB in SCHOLES

St. Philip's Church is hosting a new village luncheon club on the first & third Fridays of each month. The soup and sandwiches lunch will be served at 1 pm at a cost of just £2. There is no need to book—just turn up. After lunch there will be the opportunity to stay for a short service followed by tea and cake, or make your way home in the light. Anyone wanting a lift to the lunch should ring Alan Stanley on 0113 281 2769 - we look forward to seeing you all.

SCHOLES LODGE FARM—the way ahead

Arising from the Parish Plan of 2006 and repeated again in the 2012 review the **lack of facilities for children and teenagers** has been frequently raised at Parish Council meetings, with no action having been taken since the legal transfer of the 10 acre site was completed more than 2 years ago. Since the Primary School field was withdrawn from public access, a search has been made for other areas within the village which might be suitable, but without success. The Public Open Space at Scholes Lodge Farm would therefore seem to be the only site available and the Parish Council has commissioned reports including a geophysical & walkover survey from **Wessex Archaeological Services** as to the suitability of this sensitive area for development with such as **footpaths, play areas, benches, a wildflower meadow, more trees and heritage information boards** — a copy of their 20 page report is available on the Parish Council website—**www.barwickandscholespc.com**

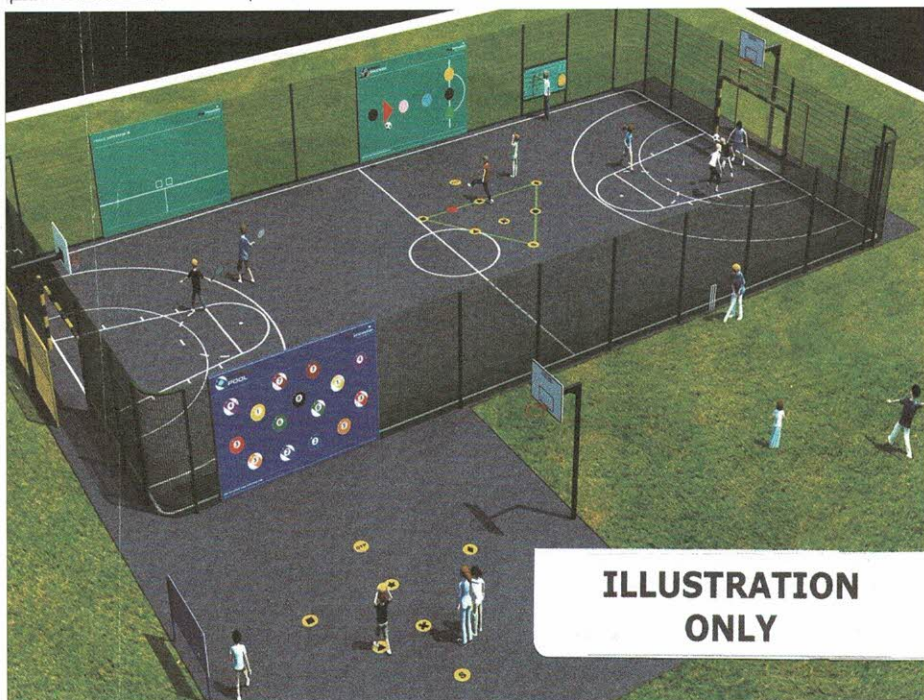
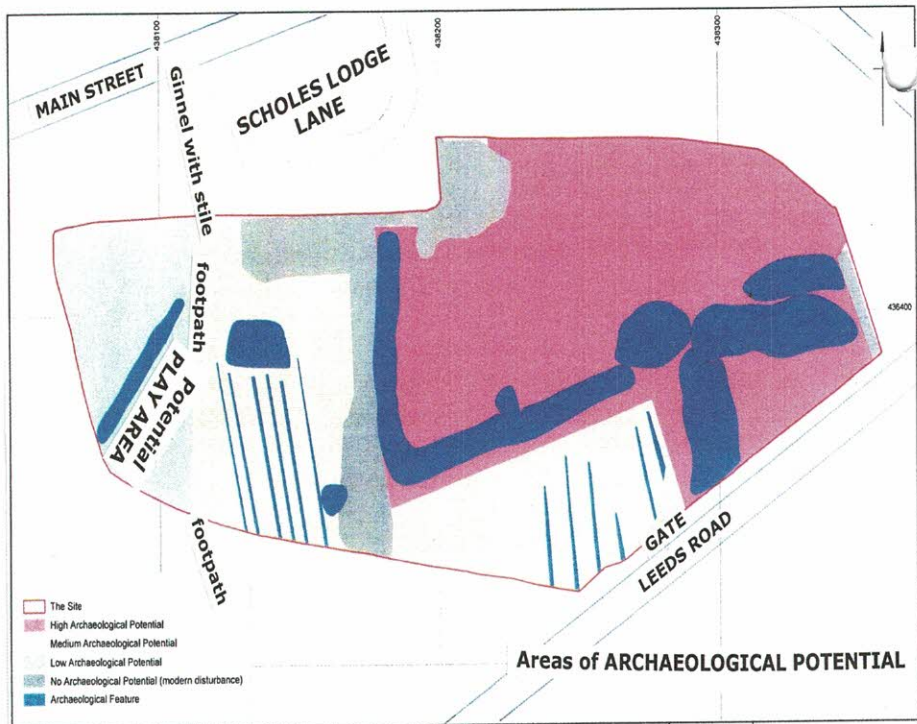
The report confirms that the suggestions offer some positive opportunities to enhance the Site's heritage significance, improve its condition and secure its long term survival through increased public awareness and access. There is no information at the site about its history. The proposal to provide footpaths and information boards would encourage visitors and enhance understanding of the Site whilst the establishment of footpaths would potentially reduce erosion of the upstanding earthworks by encouraging people to keep to defined, surfaced routes. The report also highlights the level of archaeological importance for various parts of the Site and confirms that the western section near to the existing footpath would be the most suitable for any play area as it was of the lowest archaeological value.

Nothing is set in stone at this stage as formal planning approval would be required from Leeds City Council. West Yorkshire Archaeological Advisory Service would also have an input and of course significant funding would be required if any such facilities were to be established.

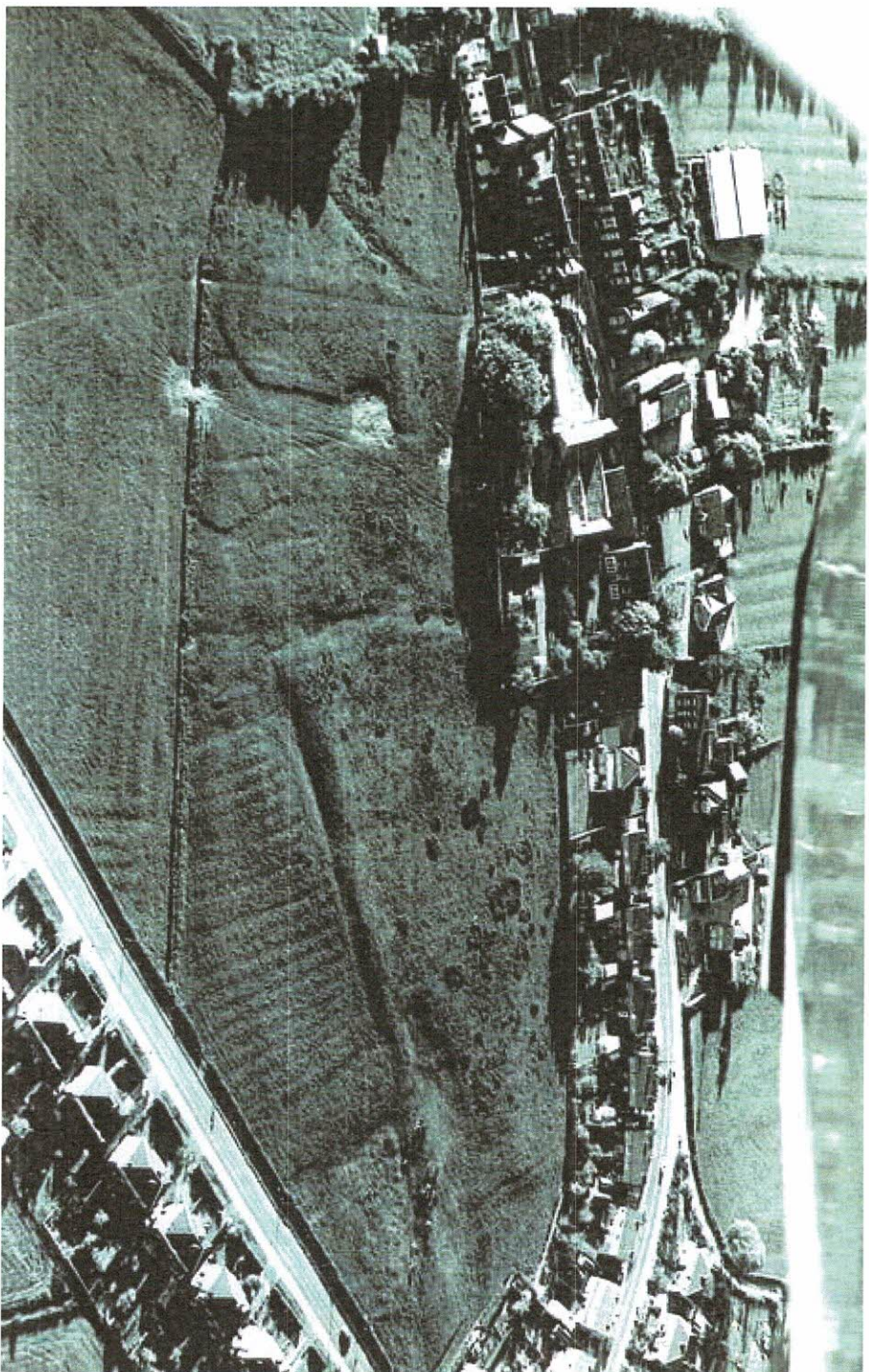
Residents are therefore invited to comment on these issues and to put forward their own positive suggestions for the future use of the area. It would also be helpful to receive comments from young persons who might well be using the facilities and this might include a MUGA pitch (multi use games area), skateboard park or other activity facility.

Please come along to the January Council meeting at Scholes Methodist in order to discuss the issues or if you are not able to attend then send your comments to the Parish Clerk by letter or email

WESSEX PLAN of ARCHAEOLOGICAL FEATURES & MUGA example



SCHOLES LODGE FARM—AERIAL VIEW of GROUND FEATURES



PARISH NEWS

Interviews for the **PARISH CLERK** vacancy have now been completed and an announcement made shortly. There were 23 applications of which 8 were invited for interview with 3 shortlisted for final interviews. The new Clerk will work alongside Chris Hassell who will be retiring at some point in the new year.

A set of goalposts is being sourced for **JACK HEAPS FIELD** in order to give youngsters somewhere to kick a ball safely and without causing any damage to neighbouring gardens or the children's playground and tennis courts.

COMMUNITY FUND applications are now being considering with results announced in the new year

Please DO NOT PARK on PAVEMENTS as it causes danger to those with prams & pushchairs

SCHOLES LIBRARY

OPENING TIMES

MONDAY & FRIDAY 2–6pm

WEDNESDAY 9–1pm

SATURDAY 10–1pm

Tues, Thurs, Sunday CLOSED

PETITION to DE-GROUP

Minutes of the **Leeds City Council General Purposes Committee** held on 28 October 2013. Item 17

Proposed Community Governance Review to degroup Barwick in Elmet and Scholes Parish Councils.

The Head of Licensing & Registration presented his report which considered whether a Review be undertaken.

Members commented that a review had recently taken place and that the petition submitted had been done so without the knowledge of the Parish Council.

It was also noted by Members that the Parish Council was not in support of a review.

RESOLVED—that a Community Governance Review should not take place.

**DARK NIGHTS are here
KEEP YOUR DOORS &
WINDOWS LOCKED
and ensure your keys
are out of sight
DON'T GET CAUGHT
OUT—KEEP SAFE**



www.plan-pro-uk.com
info@plan-pro-uk.com

Plans drawn for domestic extensions, loft conversions, garage conversions, garages, conservatories, outbuildings & new builds.

Planning & Building Control applications prepared & submitted.

For free advice and quotation call 07864 576792



Superfast
West Yorkshire

SUPERFAST BROADBAND (SFBB)

Superfast West Yorkshire is keen to raise the awareness of their campaign to improve broadband access across West Yorkshire as, in many areas, it is very poor and urgently requires updating. £24 million of new investment has been secured for improvements over the next two years. BT is the infrastructure delivery partner who will be contributing more than half of the funds required. Leeds City Council with Calderdale, Bradford, Kirklees and Wakefield make up the partnership. The Parish Council has resolved to become a **"digital champion"** in order to encourage residents to register their interests. The aim is to make **SFBB** available to 96% of premises (business & domestic) by the end of 2015. It is defined as greater than 24mb (Barwick 20mb and Scholes 2mb at present). Previous barriers to improving the network have been driven by a lack of take up by some villages such as Scholes so **ALL RESIDENTS** are invited to register which will take less than one minute—www.superfastwestyorkshire.co.uk Currently there are only 1,350 residents registered across West Yorkshire so if you want a better service for this area please register now as above. The more demand we can create the stronger is the business case to encourage telecoms operators to invest in our area. **PLEASE REGISTER NOW** More details on twitter/facebook & enquiries@superfastwestyorkshire.co.uk

SEWER BLOCKAGES

A number of blockages have been reported in recent months caused by the disposal of inappropriate items via toilets and sinks which include fat, sanitary items, nappies, cotton buds and wipes. Items as above along with baby wipes, cleaning wipes, make-up wipes, nappies, sanitary towels, tampons, cotton wool buds etc should never be placed into the sewers as these will **clog the system** and cause great problems for all residents.

WIPES, even though they may say "flushable" on the packet, will not break down in the drains and sewer system and can cause blockages. Please bag and bin these items. If you rinse out a grill pan, frying pan, wok or roasting tin under hot running water, any fat & oil will cool & solidify in your drain or sewer. **FAT & OIL** should be allowed to cool and placed in a suitable container and then into your waste bin. Please minimise your contribution to such blockages.

www.yorkshirewater.com/contactus

NEW NOTICE BOARD for SCHOLES VILLAGE



The new board has now been erected on Main Street opposite St.Philip's Church having been funded by The Barwick & Scholes Community Fund and Harewood Ward Councillors, Matthew Robinson, Ann Castle and Rachael Procter. Construction was undertaken locally by Geoff Bulmer at the Sawmills in Potterton Lane. The board will cover announcements for **Village Hall** activities as well as **Scholes in Bloom** and other village events including Parish affairs.

NEIGHBOURHOOD DEVELOPMENT PLAN (NDP)

Real progress is being made with the Plan. Mike Dando from Planning Air recently organised a 'working party' that was very well attended. Those present were divided into three groups and asked to look at a large number of issues, decide if they were planning related, and assess if any of the evidence supported the issues. Evidence encompasses all the views that you the residents have expressed in answering questionnaires, leaving 'post-it notes' at public consultations or other comments that have been received. Also included eventually will be some National Statistics, views from the 'Village Design Statement' consultations and comments from Statutory Consultees (eg Utility Companies). It was necessary to bear in mind issues that would be contained in the National Planning Policy Framework and Leeds emerging Core Strategy as it is unnecessary to duplicate these policies but to concentrate on policies which support local issues and needs.

At the end of the meeting each group suggested two themes from their session to go forward towards a 'Vision for Barwick in Elmet and Scholes'. The proposed '**VISION**' will be circulated to all residents in the New Year and comments invited. There is insufficient evidence in a number of areas and a questionnaire will accompany the Vision with all responses being factored into the draft NDP which will be available to all residents for further consultation in the Spring of next year.

The ANCIENT PARISH of BARWICK in ELMET TRUST

The Trust exists to help people in financial need in this part of Leeds. It was established in 1996 by the amalgamation of seven smaller charities founded in the 16th and 17th centuries. The most well-known of these was the John Rylie Charity. The object of the Trust is, in words of its governing document, *"to relieve, either generally or individually, persons resident in the Ancient Parish of Barwick in Elmet who are in condition of need, hardship or distress, by making grants of money or providing or paying for items, services or facilities calculated to reduce the need, hardship or distress of such persons."*

The Ancient Parish boundary was determined in 1856. It encompasses not only Barwick & Scholes but also parts of Cross Gates, Swarcliffe & Whinmoor and parts of Fearnville, Oakwood and Ladywood. Recently the Trust has gained the agreement of the Charity Commission to carry out a redefinition of its boundaries by using more up to date roads, maps and other landmarks.

The present Trustees are Alan Stanley *Chairman*, David Leeming *Treasurer*, Jack Anderson, Sylvia Snowdon and Sue Yardley, all of whom would be pleased to give further information about the Trust. Christine Hudson as Clerk continues to give invaluable service and the Trustees pay tribute to her efficiency, wisdom and compassion. If you are in financial need and would like to apply for a grant, please contact Alan Stanley on 0113 281 2769 and you will receive an application form which will give more details of how to apply and the type of things the Trust will fund—**all in the utmost confidence**.



WATCH YOUR SPEED

