



Barwick in Elmet and Scholes Parish Council News Letter May 2023

Annual Parish Meeting 15th May 2023

Chair's Report

Report on actions and activities of Barwick in Elmet and Scholes Parish Council. The previous year has been filled with a number of Royal Events, including the Jubilee celebrating 70 years of Queen Elizabeth's II reign. The Parish Council supported the event by purchasing bunting and a water bottle for every infant/junior school age child in the Parish. This coincided with the Maypole raising in Barwick. In line with tradition the Maypole was brought down and fully restored. It was then raised on Jubilee Day.

Barwick School had decided not to undertake teaching maypole dancing so it was undertaken by the Maypole Committee and a group of dedicated volunteers. The dancing on Hall Tower was impressive. The school children had voted for the May Queen and she was duly crowned. Hundreds of people lined the route from Barwick Village Hall to Hall Tower and all crowded into the field, many sitting on the Motte.

Scholes was decorated with bunting, a fun day arranged on Scholes Lodge Field which was well attended and had lots of activities for the young. The Scouts put on a barbeque and the Jubilee was well and truly celebrated.

A free bus was provided to transport residents of Scholes to and from Barwick. The day ended with the lighting of a beacon on top of the Motte to join in with beacons all over the Country.

The death of Queen Elizabeth was noted with sadness and people looked towards the Coronation of King Charles III. Villagers and residents organised their own activities. All Saints joined churches throughout the country with bell ringing as requested by the King.

At St Philip's, The Deputy Lord Lieutenant Stan Hardy attended to read "*The Proclamation*" and a message from the King. Thank you to representatives from Scholes scouting group, The Happy Together Choir, Elderberries Brass Band, the Methodist Churches and WI who all joined in an excellent service and fun day.

This was followed by the planting of the **Coronation Tree** and there was a party atmosphere in the grounds of St Philip's with lots of stalls.

The Muga area in Scholes is well used and several attempts have been made to improve the football field in Scholes. Consultations have been held regarding further playground facilities in Scholes and Barwick.

The ELOR is now open, is well used. Improvements have been made to the Verity Strip in Barwick providing access to Barwick Cricket Club and the allotments. Thanks to our In Bloom Groups for the work they do keeping the villages floriferous. Also, thanks to all the organisations, village halls, community groups providing activities, scouting, sports clubs, the churches we need you all.

Claire Hassell, Chair.

The meeting also considered the siting of the “children’s book exchange” and fund raising for a defibrillator in Barwick, which were also agenda items. Objections on the location of the suggested play area in Scholes.

15th May Annual Parish Council Meeting

The May PC meeting records the election results and changes to the team.

The current councillors will serve for four years. Alexandra Cantelo, Karen Dales, Kinga Ragg, Paul Remmer, Paul Walsh, Stella Walsh, Gillain Williamson.

Dr Stella Walsh (Scholes Ward) was voted in as Chair and **Gillian Williamson (Barwick Ward)** as Vice Chair of the PC for the forthcoming year.

Claire Hassell, the current chair of the Parish Council retired after 16 years of service and her energy and enthusiasm working on behalf of the community will be missed. Claire will remain active in the community supporting the allotments, the village hall and other projects in the village.

Jacqueline Ward decided to step down from the PC. She joined the Parish Council in November 2019, and has been very active during her time as a Councillor supporting the community. Jacqueline is continuing her support by looking after the defibrillator in Barwick and she is a member of the Neighbourhood Planning Review Group.

Graham Slater joined the Parish Council in 2019, he resigned at the May meeting. In Scholes he was instrumental in projects such as the Multi-Use Games area, sports field drainage, new benches and defibrillator. Many of these projects were the result of sponsorship/ grant funding he successfully obtained. He attended many events outside the parish building up a network of contacts with LCC and other parishes to share ideas and information.

Paul Walsh joins the PC and is also a member of the Neighbourhood Planning Review Group. He has a keen interest in community development and wants the parish to become a beacon of sustainable, inclusive and positive change for the future. Born and raised in Scholes, he has spent 15 years working for the NHS, serving the wider community and most vulnerable in our society. He is looking forward to trying to help make Barwick and Scholes a better place for his children, family and community to live, grow up and grow old in.

Current Parish Council Vacancies

There is **one** vacancy for a councillor in **Scholes Ward**

There are 4 vacancies for Councillor's in Barwick Ward. This is a matter of some concern to the Parish Council as it means there is a lack of representation for this Ward and a heavy burden for the current two councillors to deal with.

Anyone who lives locally and is over 18 years of age can volunteer to become a councillor. The role of a Parish Councillor includes working to identify issues which are important to the lives of the residents you represent, particularly those that will help improve the quality of life and the environment in the local area. In addition, influencing and shaping the long-term development policy for the parish, and as part of the planning process, comment on planning applications in the parish.

Please ask the Clerk or speak to other councillors for details of the contribution you could make to the PC.

Meetings are held on the first Monday of the month in alternate villages, there are no meetings in August.

Current dates for meetings and venues

3rd July Barwick, John Rylie Hall

4th September Scholes

2nd October Barwick, John Rylie Hall

6th November Scholes

4th December Barwick, John Rylie Hall

There are also various other committees which you can be involved with if you wish, examples of some of the additional groups you could get involved with include;

Finance and General Purposes Committee: Chair, Kinga Ragg

Scholes Lodge Field Subcommittee: Chair, Paul Remmer

Neighbourhood Planning Group: Chair, Phil Maude

A new committee is being established to manage **Hall Tower Motte and Bailey in Barwick. Resident representatives** are being encouraged to join this new group. Meetings will be held, as needed, a few times a year and will consider the maintenance and future developments in this historic area.

Please contact the Clerk if you are interested in joining this group.

Cllr Alexandra Cantelo is the PC representative of the Police and Communities Together (PACT) meetings, which are held every month. If you wish Alex to raise issues at these meetings you must let her have brief background details and a crime number. To obtain a crime number for non-emergencies, phone the **police on 101**. Alex can then use this to seek further information and track issues that arise in the parish. **For emergencies telephone 999**

Susan Broadwell is the local community police support officer (PCSO) Please contact her if you wish to report any activity in the parish which is of concern.
Susan.broadwell@westyorkshire.police.uk

More information can help direct resources effectively and help keep us all safe. Please do not forget to help yourselves and reduce crime; lock doors and windows, and do not leave valuables in view.

Local contractors

The PC would like to hear from local contractors, who would like to register their interest to undertake work on behalf of the Parish Council. The PC has to look after a number of areas of land and need contractors to cut grass, mend gates etc. Jobs are very variable from small to larger projects.

Currently the PC needs paving repaired/replaced at the Pavilion. If you are interested, please contact the Clerk.

Contact Details for Councillors

Barwick Ward

Kinga Ragg Kinga.ragg.bspc@gamil.com
Gillian Williamson gillianwilliamson.pc@gmail.com

Scholes Ward

Alexandra Cantelo alexcantelo.parishcouncil@outlook.com
Karen Dales karen.dalesparishcouncil@talktalk.net
Paul Remmer paulremmerbspcc@gmail.com
Paul Walsh PaulBSPC@outlook.com
Stella Walsh stellawalshparishcouncil@gmail.com

Keith Langley is Clerk to the PC and works part-time

Contact details; telephone: 0113 393 5861

Email: clerk@barwickandscholespc.org

There is also a contact form on the PC website. <https://barwickandscholes.org>

Your views are important to the PC, please do not hesitate to get in touch.



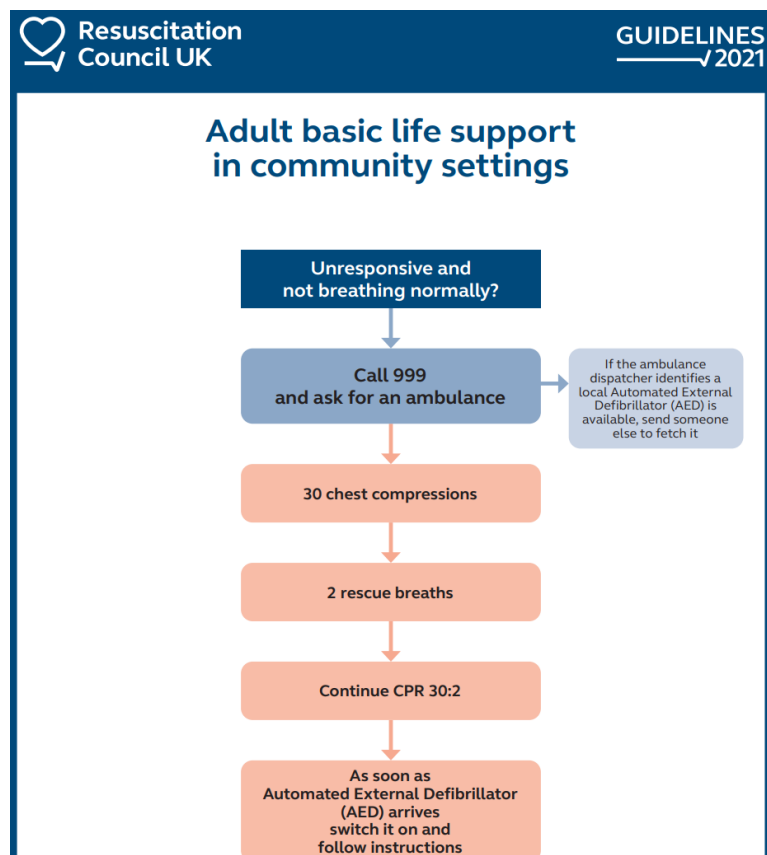
The New defibrillator has been installed outside the Pavilion Scholes and is now functioning.

This has been achieved thanks to 2 grants, including one from Ward Councillors Mathew Robinson, Sam Firth and Ryan Stephenson.

Barwick in Elmet are fund raising to provide a further defibrillator to be placed in the centre of the village. Funds will also be needed for the pads that have to be replaced if the machine is used. Please give generously and donate at

https://m.facebook.com/story.php?story_fbid=pfbid0C8oWAAwqn5bc8kcVmLvdGMdnTpKn38LiiMytCfLd1gQpMq4PFRjunkv7pZD1FDkZI&id=100000919773934&sfnsn=scwspmo

In an emergency always call 999 first and if possible, start CPR before you try to retrieve and use the AED defibrillator.



The memorial benches for Queen Elizabeth II for each of our villages have now been installed.

Thanks to Ward Councillors Ryan Stephenson, Sam Firth and Matthew Robinson who provided these benches.

Many thanks to **Brian Bartle** who volunteered his time and skills to renew the list of past Parish Council Chairs dating back to the 1800's. The plaque is permanently displayed in John Riley House Barwick in Elmet.



Photograph by Tony Biscombe



Coronation Tree Planted 7th May

To commemorate the Coronation of King Charles 3rd and Queen Camilla an **acer** has been planted in the grounds of St Philip's, Scholes. The tree was planted by the Lord Lieutenant, Jon Bliss, Scholes Scouts, Claire Hassell Chair of PC and Janet Horkan.

Thank you to everyone who made Sunday 7th May such a special community event to celebrate the coronation.

Let's hope this coronation tree grows as successfully as previous commemoration trees in the parish.



NEW PEDESTRIAN CROSSING FOR SCHOLES

Leeds City Council have agreed to provide a new pedestrian crossing in Scholes, located outside the entrance to the Primary School which will be a real benefit for parents and pupils using the school. Lollipop lady Sue Yardley, who has spent years helping people across the road, welcomed the decision and in characteristic fashion said "it was about time that a crossing was provided". She fears that when she finally retires, she will not be replaced, and said she was very pleased that a crossing is being provided, she knows from experience how difficult it is crossing the road when the school is starting and finishing. It is hoped that the crossing will be installed during the summer holidays so it is in place for the start of the new school year.

Ward Councillor Matthew Robinson said, "After years of pushing for this on behalf of the residents of Scholes, Ryan, Sam and I are delighted we have secured funding for the new crossing. Road safety has always been a priority, and this new crossing will help keep people safe in the village. My personal thanks to Sue for her years helping the school children of our community. Sue, the residents, school and community have all helped secure this new crossing for Scholes.

The Parish Council is supporting this addition to the village. There will be further consultation in due course.

STOP PRESS it is understood that work will commence on the traffic lights at Scholes Lane end at the end of the May. Temporary 3-way traffic lights will be used at various times during the works. Wherever possible, these will be confined to off-peak hours.

Carriageway widening works will introduce dedicated left and right turn lanes on Scholes Lane, increasing capacity at the junction whilst improving its safety. A key element of the scheme will involve signalisation of the junction to ease traffic movements and improve the traffic flow onto the A64 (York Road) from Scholes Lane.

Road widening will also take place on the A64 within the West bound carriageway. This will allow an extra lane for traffic travelling in the West bound direction and will therefore ease traffic movements. Traveling in the East bound direction towards York and turning right onto Scholes Lane from the A64 will be made easier due to the signalisation of the junction. Footway improvements are also included within the scheme, a shared cycleway/footway will be provided at a width of 3m. Maps can be viewed on the PC website. <https://barwickandscholes.org>

Barwick Methodist Church – Building Fund Update

Thanks to the generosity of Church members and the kind help and support from many friends in the village and a £2,000 grant from the Churches Trust, urgent work to the roof and also repairs to the large stained-glass windows has been carried out.

A recent much appreciated £4,000 grant from the **Barwick and Scholes Community Fund** brings the Building Account to £7,700. This account needs to reach £10,000 before tenders will be sought for the required spire and stonework repairs. As soon as this work has been costed, we shall continue with further fundraising and explore the possibility of seeking additional grants. Thank you for your continued valued support which is greatly appreciated by members of Barwick Methodist Church.

Barwick Methodist Chapel Schoolroom is suitable for meetings, children's parties and group activities. Available for hire at £10 per hour.

Contact: Nicholas Howe nh45nh1@outlook.com

Barwick in Elmet and Scholes Community Fund

The annual Braham festival will be back in August, check out the new website bandscf.org launched by Barwick and Scholes Community Fund for information re upcoming events. Applications for community tickets is **now closed**.

Barwick and Scholes Probus Club

(For retired professional and business men)

Tuesday mornings 10.00 12.00

John Rylie House, Barwick.

Future speakers: 20th June Death on the Matterhorn
18th July Deeds to earn the Victoria Cross
15th August Merchant Navy in World War 2
19th September Guy Fawkes, Yorkshireman!

New members welcome

Contact Alan Stephenson 07855 595060 ajmstephenson@btinternet.com

Barwick-in-Elmet Tennis Club

Located on Jack Heaps Field, Welfare Avenue. The 2023-24 season has started and welcomes new members of all ages and abilities. Whether you're looking for a chance to test your skills against experienced players, play league matches and friendly tournaments, keep fit and meet new people or fancy a casual game with friends and family we hope Barwick is the club for you. Social session, **Sunday morning at 10.30am Annual membership** £25 for adults or £30 for couples including juniors. For more information facebook.com/BarwickTennis barwicktennis@gmail.com Telephone Ann 07544 709 676 or Phil 07940 441602.

All Saints' Church, Barwick in Elmet Use it or Lose it!

All Saints' Church is an historic building and has played a large part in village life, assuming an important role in the lives of many families for Sunday services, baptisms, weddings and funerals. The church is sadly lacking members and at present waiting the appointment of a new Rector. There are craft classes for old and young, a Ladies' Fellowship where a variety of speakers, with the chance to meet others over refreshments. Old and young are welcome to join these events and for the very young there is provision for mothers/carers and toddlers called Family Fun and last but not least, "Messy Church". The church has a choir and is keen to accept new members. Please support your village church.

Scholes Methodist Church Coffee Mornings

**10am-12 noon
Saturday June 3rd and July 1st**

Film evenings

Monday 12th June "*Mrs Harris Goes to Paris*" 19.00
Monday 10th July "*Bank of Dave*" 19.00

Scholes Village Show Saturday 9th September 2023

The annual Village Show is back in Scholes Village Hall

Make sure you are planting those seeds to enter the vegetable and fruit section. Home baking, crafts and children's sections also available and the ever-popular photographic section

Entries can be brought to the hall from:

Friday 8th September 17.30 till 18.30 and Saturday morning from 9.00 till 11.00am

Show open from 13.45. Teas will be served by Scholes WI.

There will be a raffle, tombola, produce and craft stall.

John Rylie Hall, Barwick Coffee Morning

Thursday Morning from 10am

Coffee, biscuits, raffle and bingo.

Everyone welcome

Elderberries St Philip's Church Scholes meets Monday afternoon from 13.00

Come along and learn new skills or join in gentle chair exercise with Donna
Brass band and folk singing
Painting and drawing
Genealogy
Bridge
Computer/camera assistance
Refreshments available everyone welcome.

Time to get walking!

With Spring on its way, start to think about getting out to walk in the beautiful English countryside but not sure where to find new and interesting walks?

Walking in Yorkshire <https://www.walkinginengland.co.uk/yorkshire> has loads of walks to download. Whether you want to walk on your own or with a group, (details of walking groups in the county) the information is there in one place. Details of walks from half a mile to twelve miles plus, with notes of suitability for pushchairs/wheelchairs, everyone can find a walk to enjoy. **Print for free.**

Check the website and get walking! John Harris john@walkinginengland.co.uk

Responsible Dog Ownership

Dog Owners were extremely angry at the notice in the previous News Letter regarding the need to have dogs on leads on PC land.

Barwick residents attended the PC meeting and submitted a petition with 150 signatories seeking to reverse this decision. Scholes residents called a meeting which was well attended by residents and councillors.

This was a useful meeting which provided an exchange of information and issues, thank you to everybody who took the time to share their views.

Summary of discussion:

Acknowledging that the majority did pick up their own dogs, dog walking community to be more pro-active picking up dog fouling for the community benefit to pick up "missed poo" in field and paths

- dogs in field to kept *under control*
- dog poo bag receptacles to be increased in sports field, and dog walkers' community to take responsibility for keeping topped up
- PC to support education, disseminate information in newsletter, enhanced engagement and consultation with dog walkers' community
- Signage and education to include protection of cricket pitch area; walking only around perimeter, and no throwing balls for dogs (as skids damaging outfield), keep central square **completely** off bounds.

The BIG Scoop



WHY SHOULD WE SCOOP THE POOP?



1. The Law

Dog fouling under Section 22 of the Litter Pollution Act 1997



It is the law that dog owners have to pick up their dog's poo in public places.

Owners can be fined up to €4,000 if the poo is left behind!



2. Health

Dog Poo can make people sick as it can contain nasty bacteria such as E-coli and parasites like roundworm, the larvae of which can cause loss of vision.



Dog poo can also spread illness and disease to other dogs and wildlife.



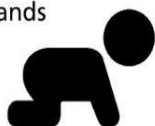
Always use a Poo Bag or a scooping device and wash your hands when you get home.



3. People it affects

There are people in our community who are more at risk of coming into contact with dog poo and putting their health at risk.

Babies and toddlers who love to explore the world with their hands



Disabled people, people using walking sticks, crutches and wheelchairs



People using **buggies and prams**



Visually impaired people - may not be able to avoid stepping on dog poo on the footpath and an unscooped poo can make their guide dogs sick.



Be Kind to your Community

Bag it, Bin it!



Registered Charity Number 20057978

Scholes Lodge Field
Carnival with Big Top
Saturday 10th June 11.00-17.00
Free Entry



Come along to join circus performers who will be teaching juggling, tight rope walking, hula hoop and other fun skills
Games for everyone, including doughnut eating
Teams needed for Tug of war



Fancy dress competition

Music from Chris Berry Band

Variety of stalls

Scholes Scouts will be providing a fabulous barbeque
Or bring your own picnic and drinks

Car parking St Philips: Access via stile off Main Street
Disable access off Leeds Road, please be aware this is a field with uneven surfaces.



Thanks to the **Festival Community Fund** for the generous donation that has enabled us to host this event.

Dog walkers please keep dogs on leads as there are children around, please ensure that you clear up after them. **Contact Janet Horkan 07859282252**
Email horkanjanet@yahoo.com or Sue Glover 01132 328362